

Nordic Semiconductor ASA

nRF52832 Bluetooth Smart/ANT/2.4GHz RF Development Board (PCA10040)

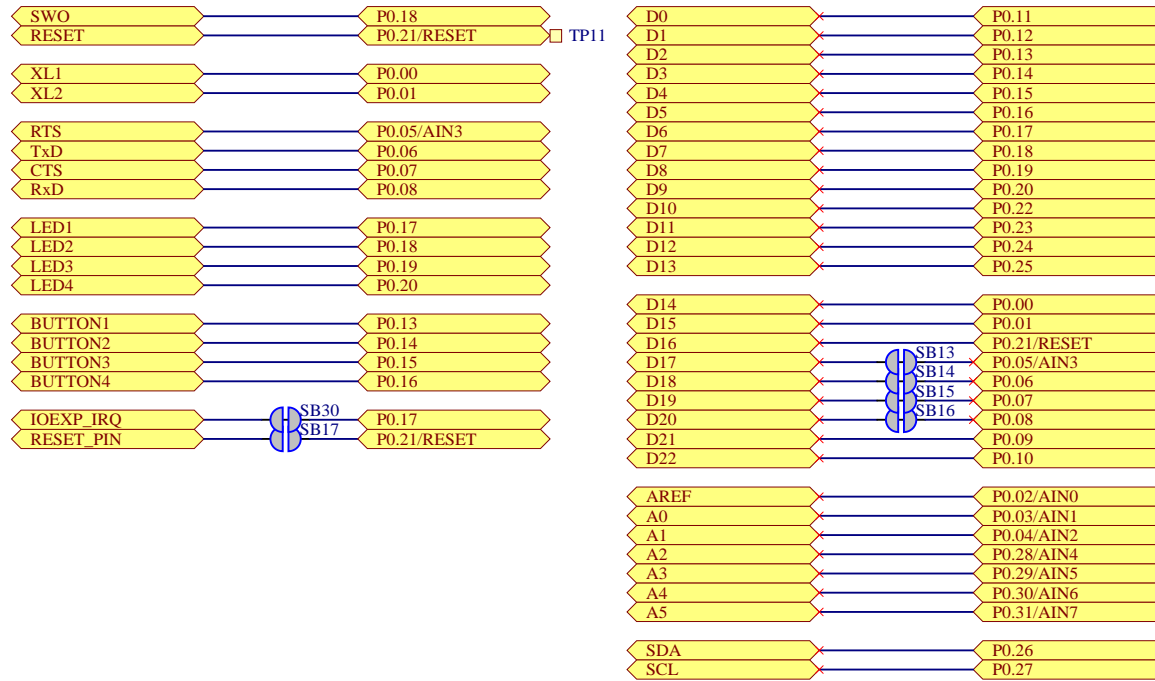
- Sheet 1: Cover
- Sheet 2: nRF Radio
- Sheet 3: Pin Map
- Sheet 4: Interface MCU
- Sheet 5: Buttons and LEDs
- Sheet 6: Connectors
- Sheet 7: Power Supply

✗ The No ERC object is a design directive.
This directive is placed on a node in the circuit to suppress reported warnings and/or error violation conditions that are detected when the schematic project is compiled.

Cover			
Size	Project Number	Revision	
A3	PCA10040	2.1.1	
Date: 31.05.2021		Sheet 1 of 7	
File: sheet1_cover.SchDoc		Drawn By: KJP/RUBR/GETR	



GPIO pin mapping



Title Pin Map

Size
A4

Project Number
PCA10040

Revision
2.1.1

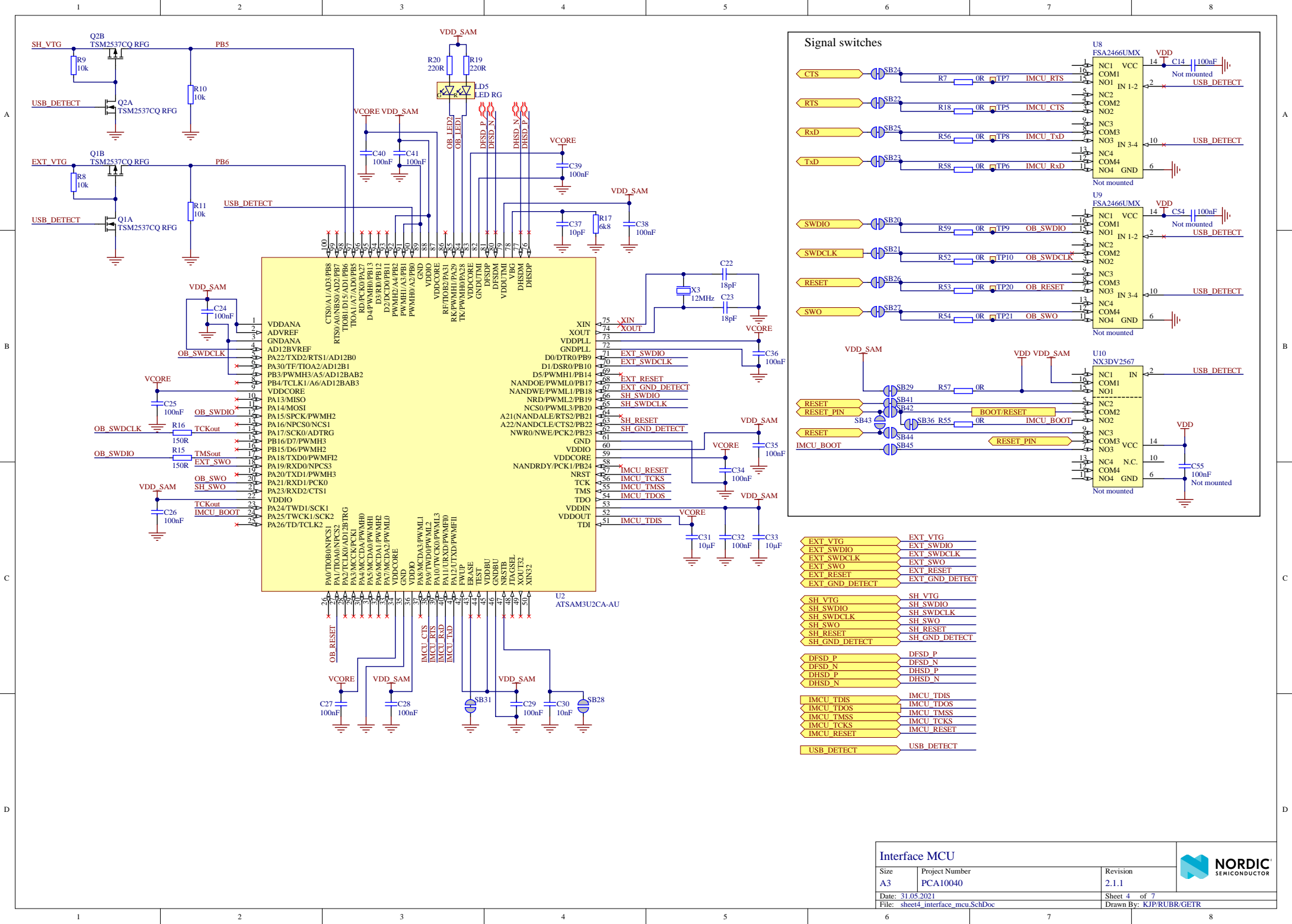
Date: 31.05.2021

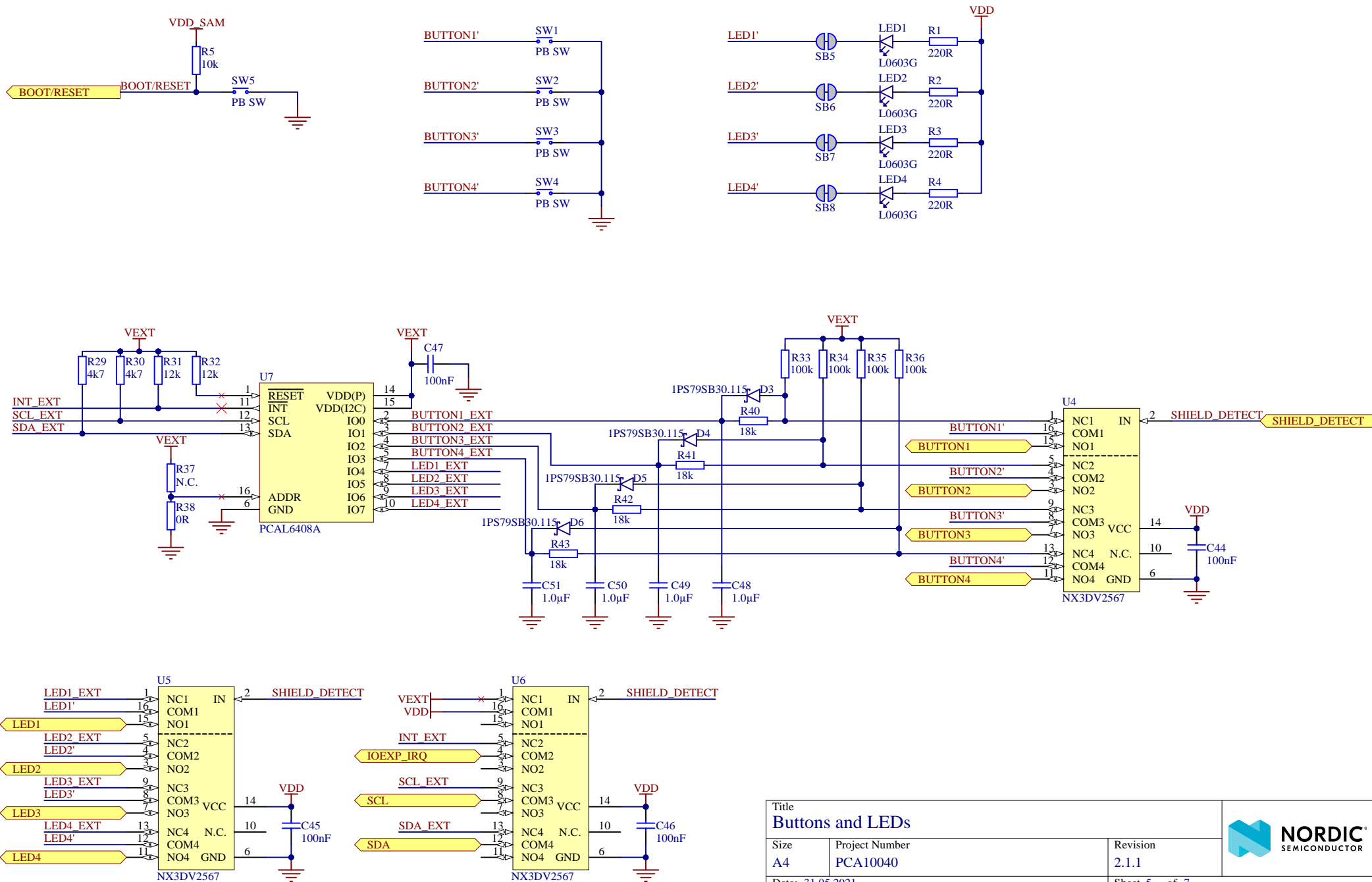
Sheet 3 of 7

File: sheet3_pin_map.SchDoc

Drawn By: KJP/RUBR/GETR







Buttons and LEDs

Size
A4

Project Number
PCA10040

Revision
2.1.1

Date: 31.05.2021

File: sheet5_buttons_and_leds.SchDoc

Sheet 5 of 7

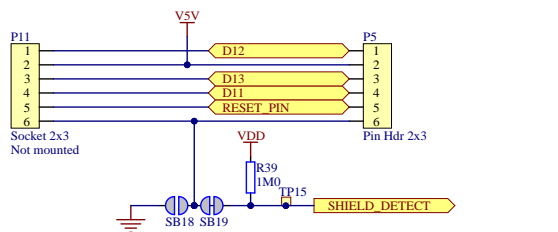
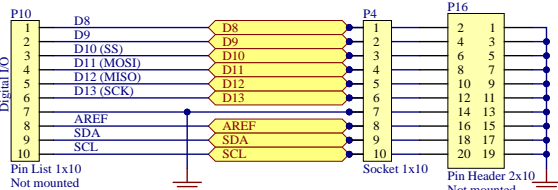
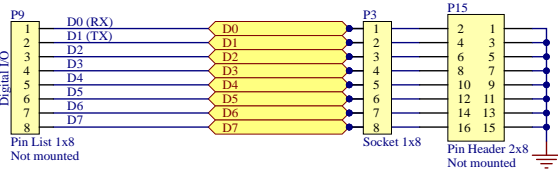
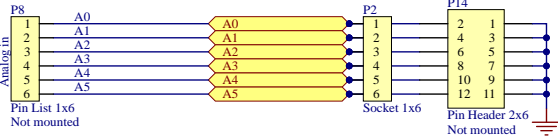
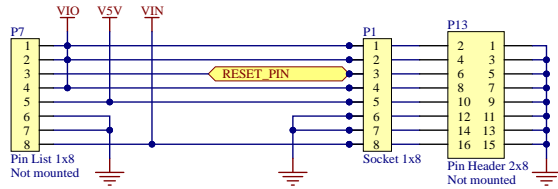
Drawn By: KJP/RUBR/GETR



Arduino Interface Connectors

Bottom Connectors

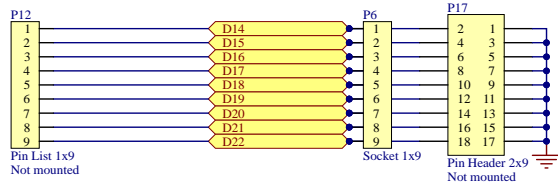
Top connectors



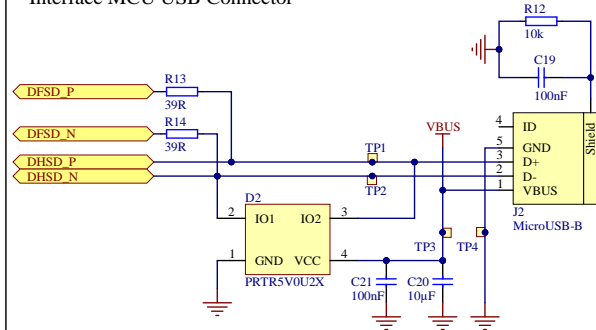
Auxiliary Connectors

Bottom Connectors

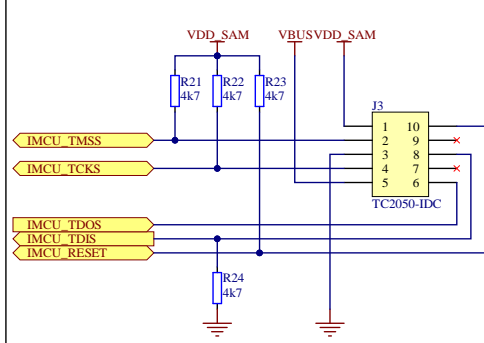
Top connectors



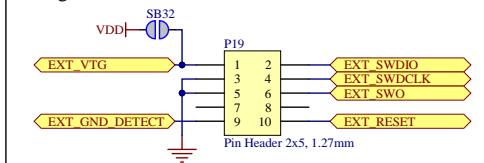
Interface MCU USB Connector



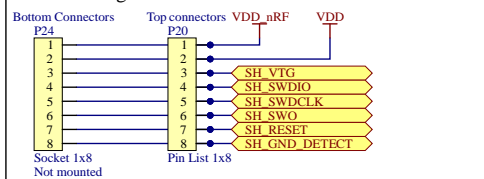
Interface MCU Programming Connector



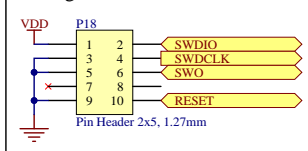
Debug OUT Connector



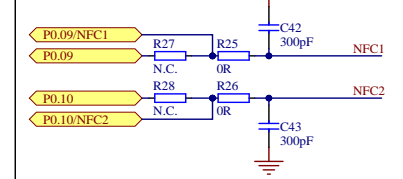
Shield Debug and Current measurement Connector



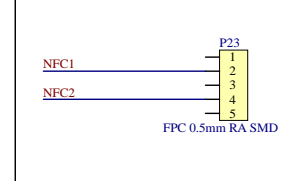
Debug IN Connector



NFC pin configuration

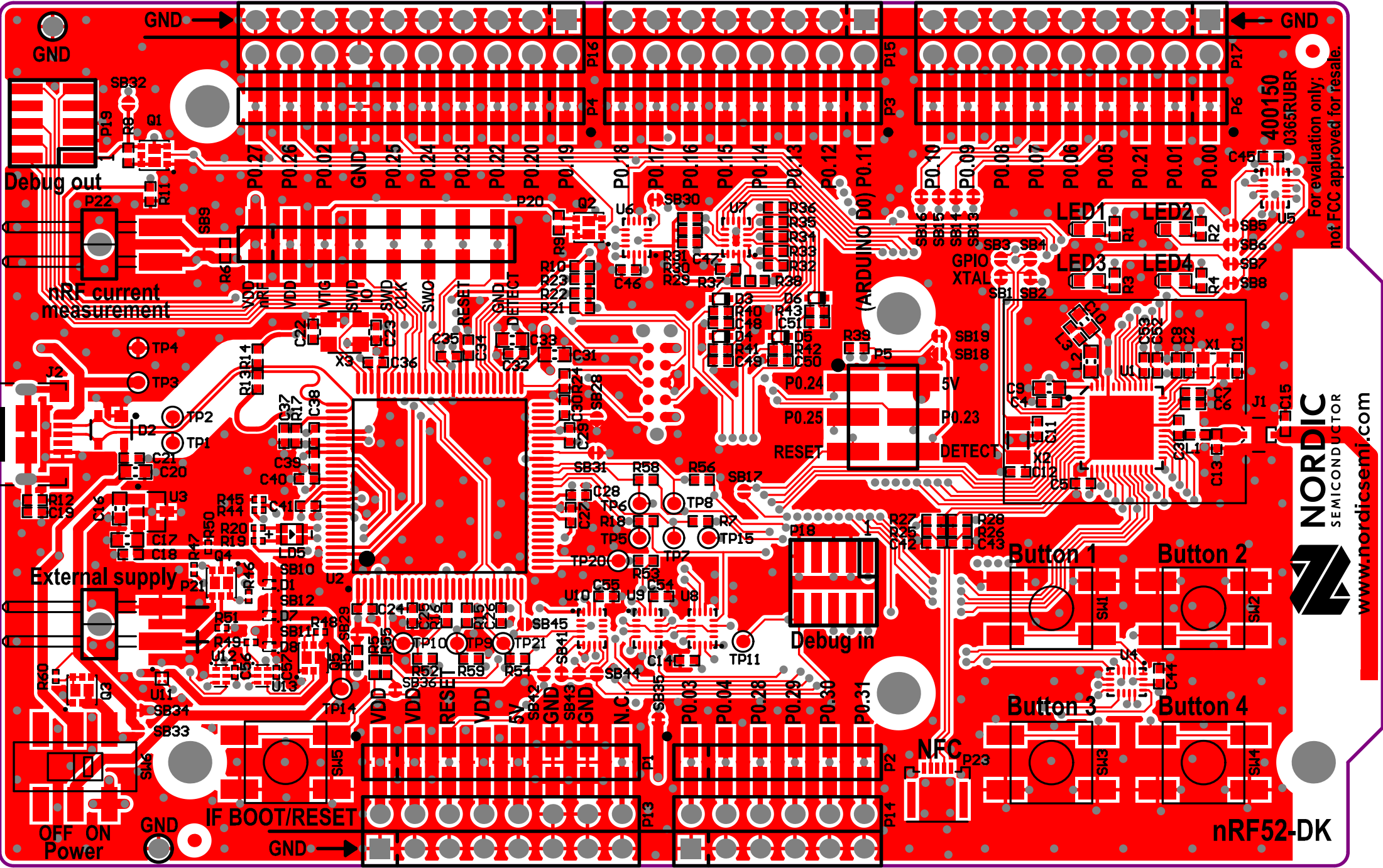


NFCT Antenna Connector



Connectors

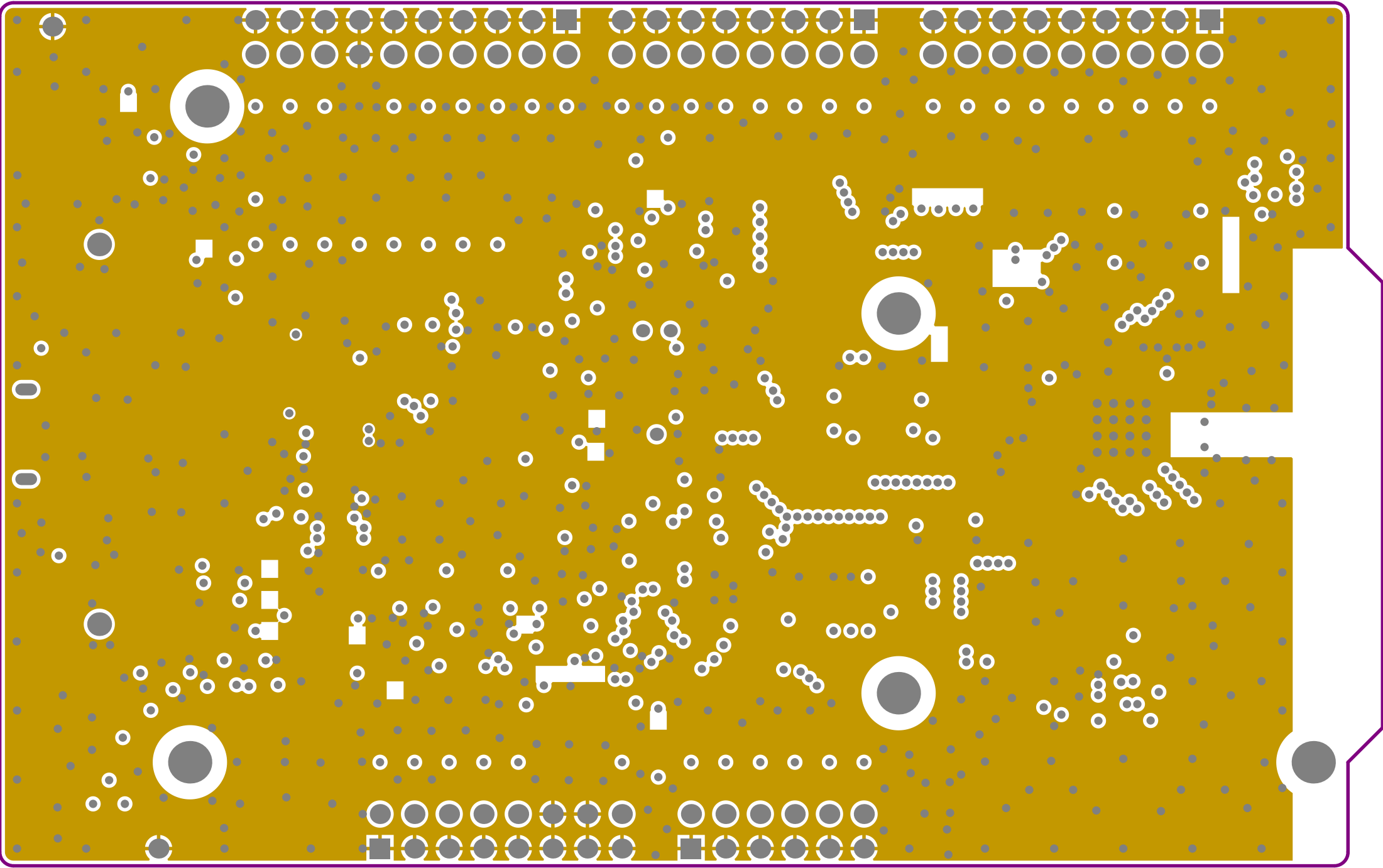
Size A3	Project Number PCA10040	Revision 2.1.1	
Date: 31.05.2021	Sheet 6 of 7		
File: sheet6_connectors.SchDoc	Drawn By: KJP/RUBR/GETR		

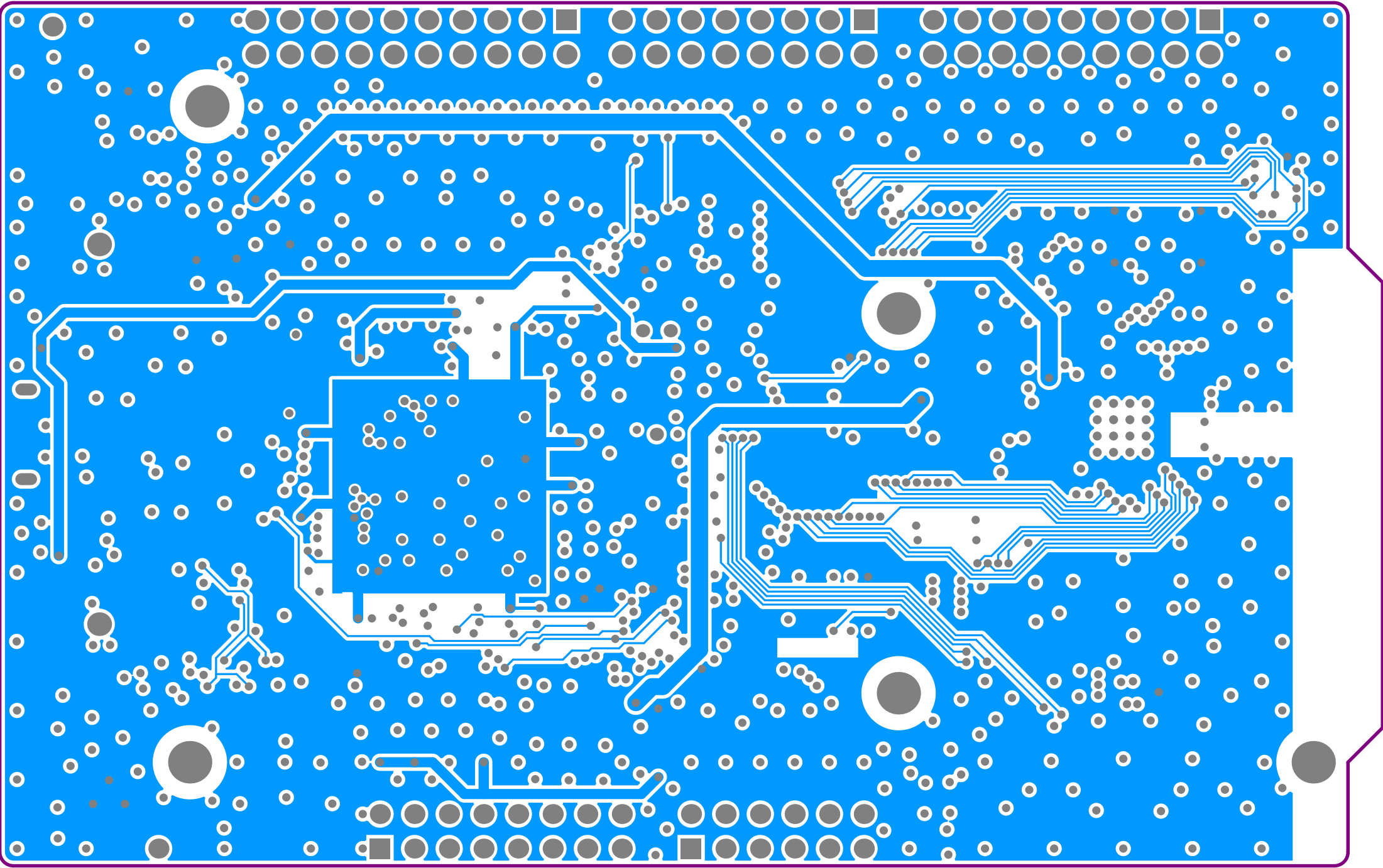


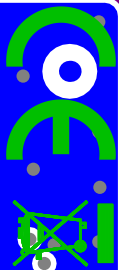
For evaluation only;
not FCC approved for resale.

NORDIC
SEMICONDUCTOR
www.nordicsemi.com

nRF52-DK

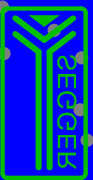






P0.51	RESET	SB15	GPIO	PIN
P0.50	LED 4	SB8		
P0.19	LED 3	SB1		
P0.18	LED 5	SB6		
P0.17	LED 1	SB7		
P0.16	GPIO 4			
P0.15	GPIO 3			
P0.14	GPIO 5			
P0.13	GPIO 1			
GPIO Function Short HW I/O EXPANDER				
(+V) (-V) (-I) (-I)				

P0.18	MECS			
P0.09	MEC1			
P0.08	RXC	SB14S5	GPIO	PIN
P0.07	C12	SB15S4		
P0.06	LXO	SB14S3		
P0.05	R12	SB13S5	LE WCN	
P0.04	X13	SB3		
P0.03	X12	SB1		
P0.02	X11	SB4		
P0.01	X10	SB5		
GPIO Function Short HW				



ARM Segger.com
J-Link Technology

enabled
mped
ARM

