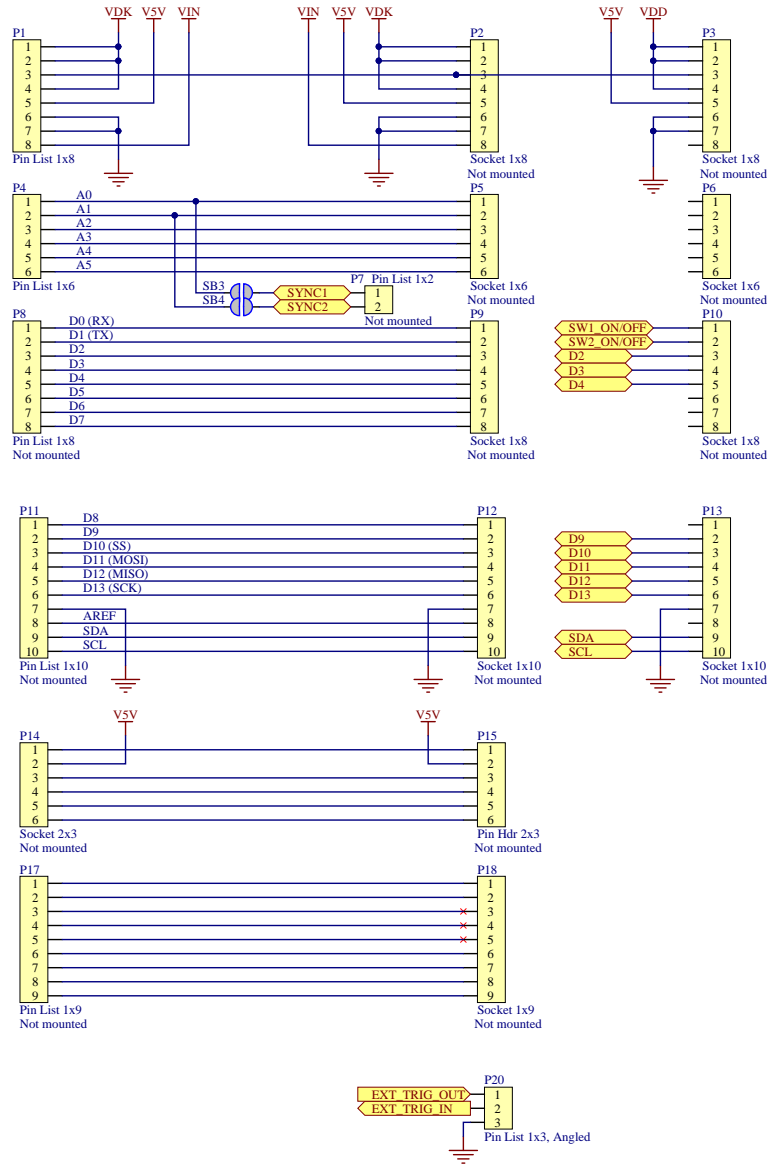
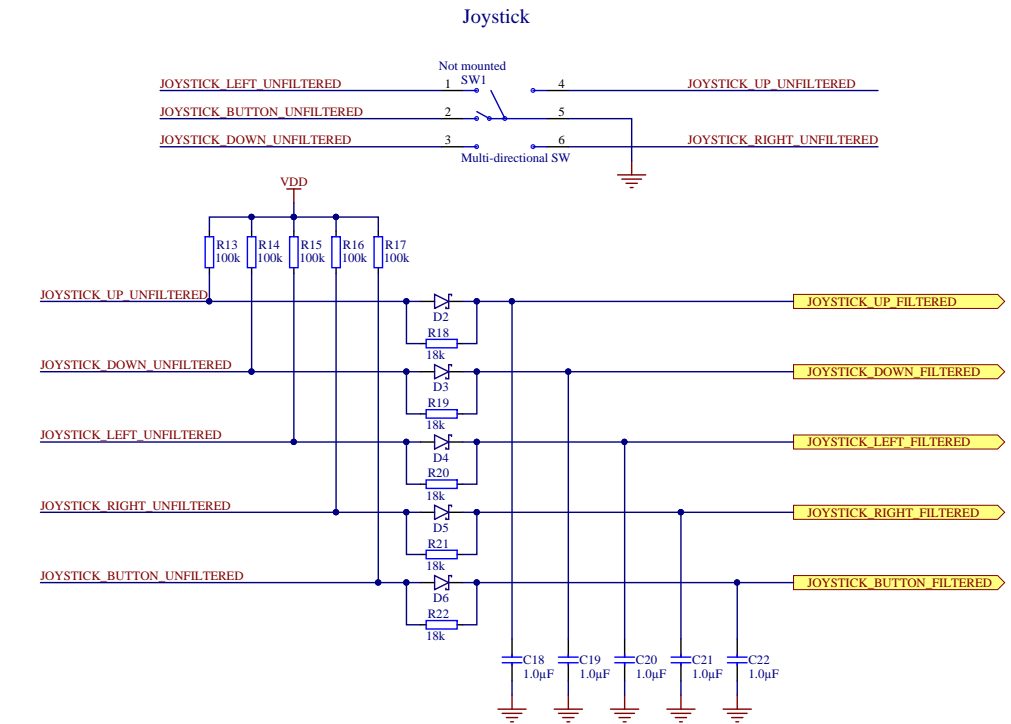


## Arduino Interface Connectors

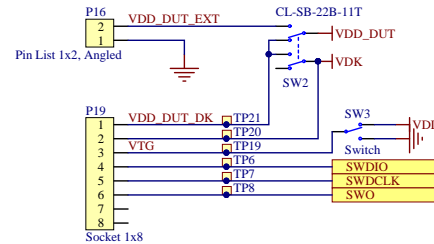
### Bottom Connectors



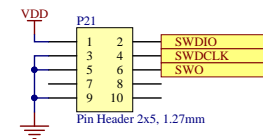
### Top connectors



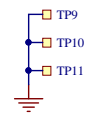
### DK and DUT interface





### Debug IN Connector



### Instrument ground

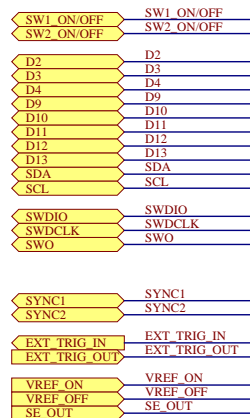
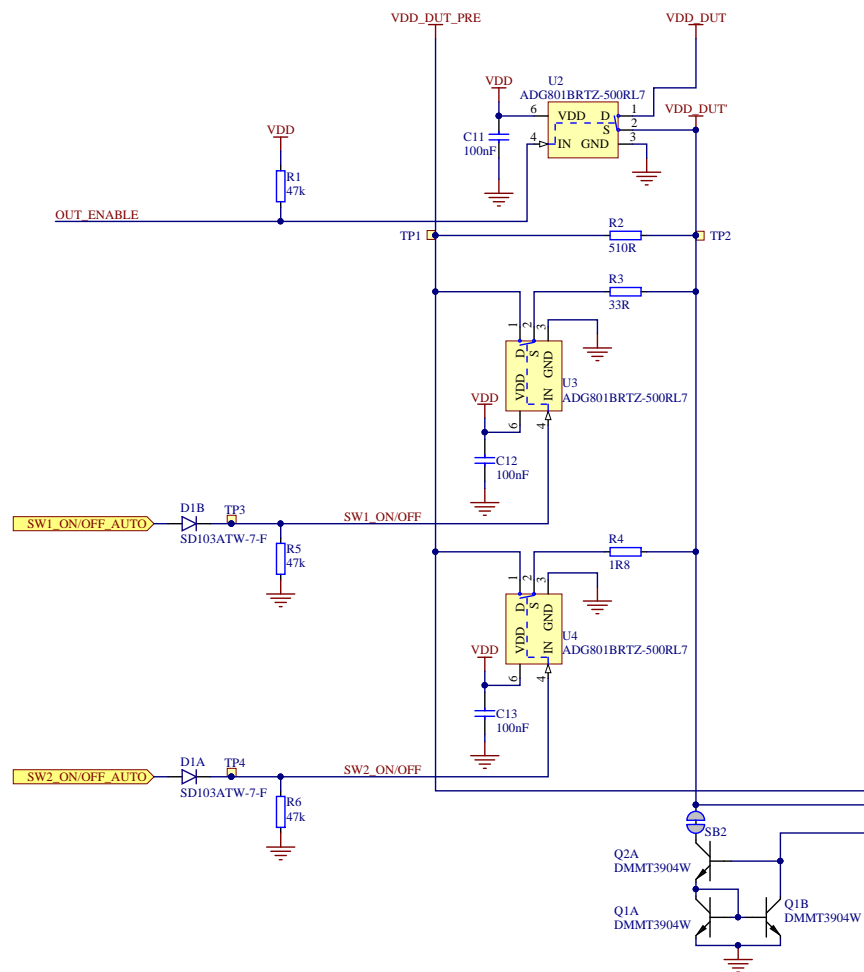


### Power Profiler - Connectors and joystick

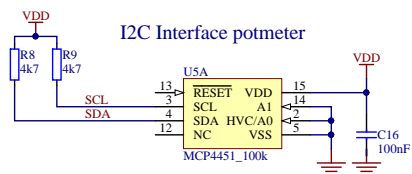
Size A3	Project Number 4425	Revision 1.0.0	 
Date: 17.06.2016	Sheet 1 of 4		
File: pca63511 - Connectors and joystick.SchDoc	Drawn By: ERSARUBR		



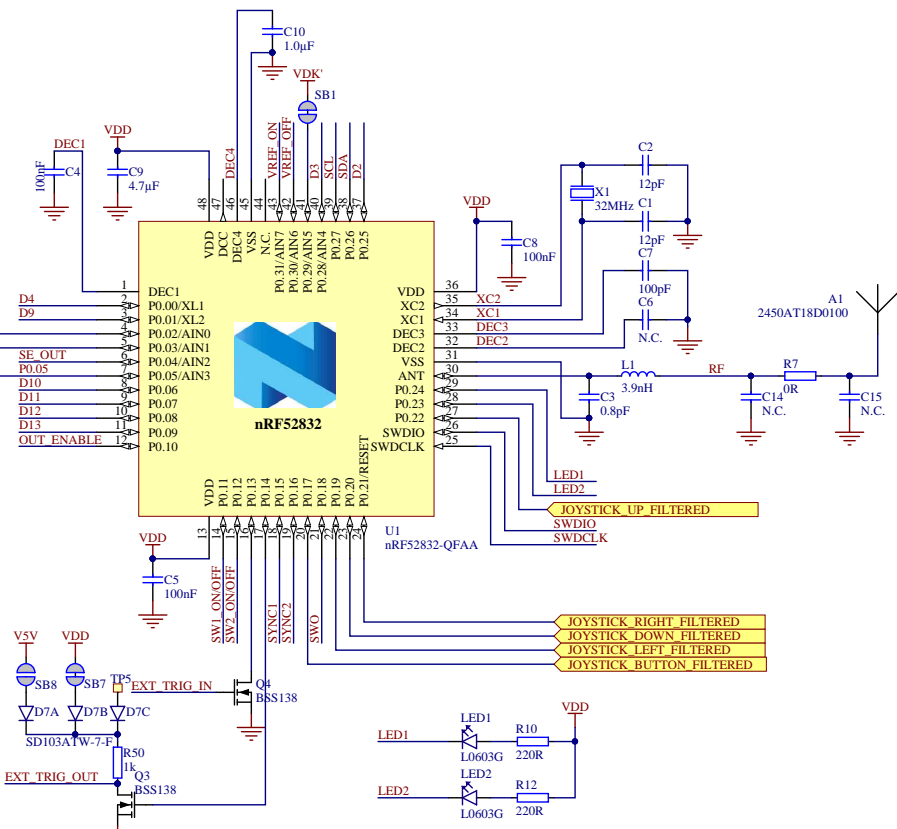
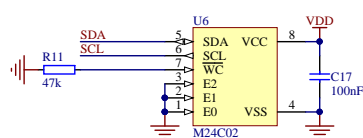
### Current measurement



## I2C Interface potmeter



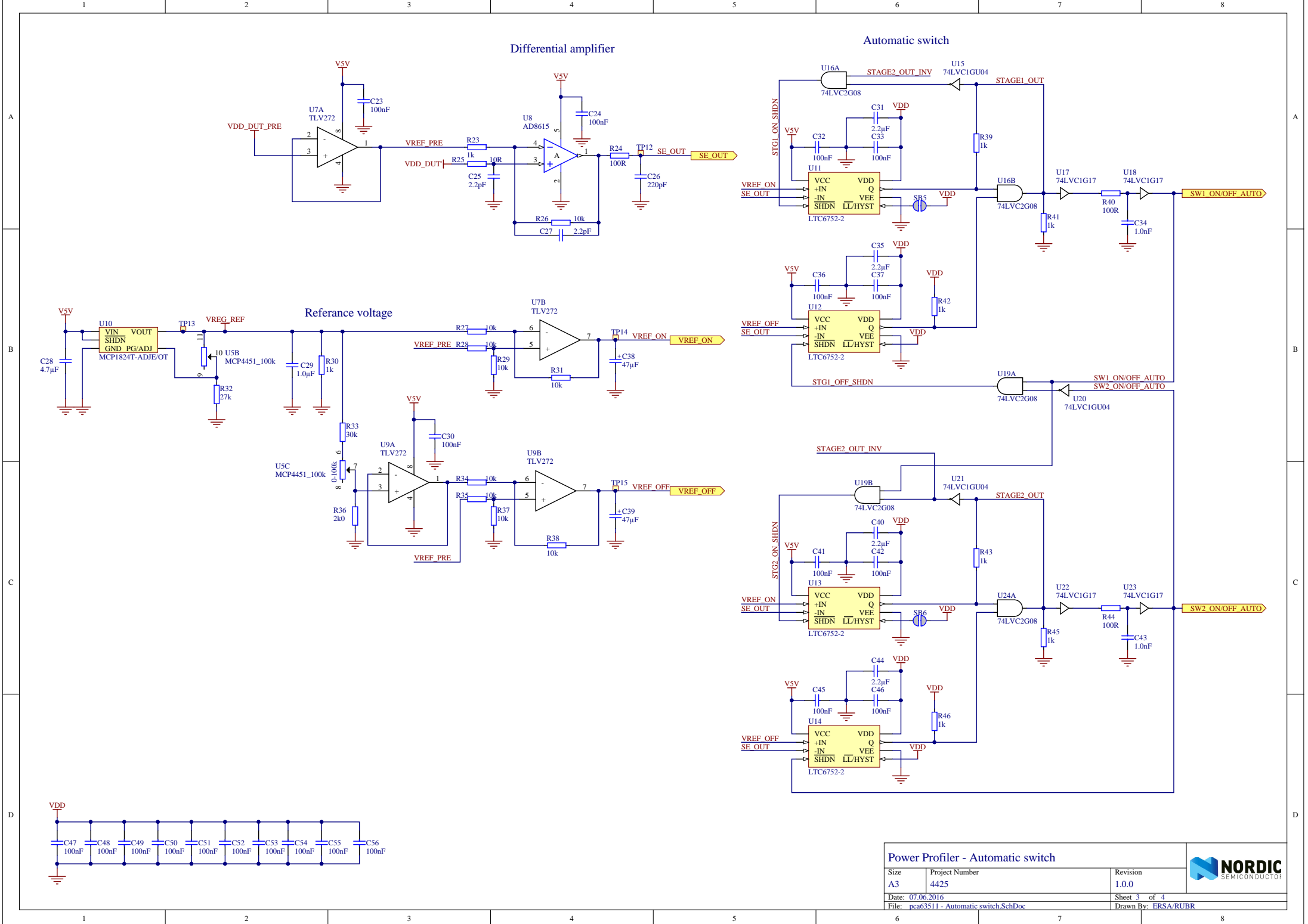
## I2C Interface EEPROM

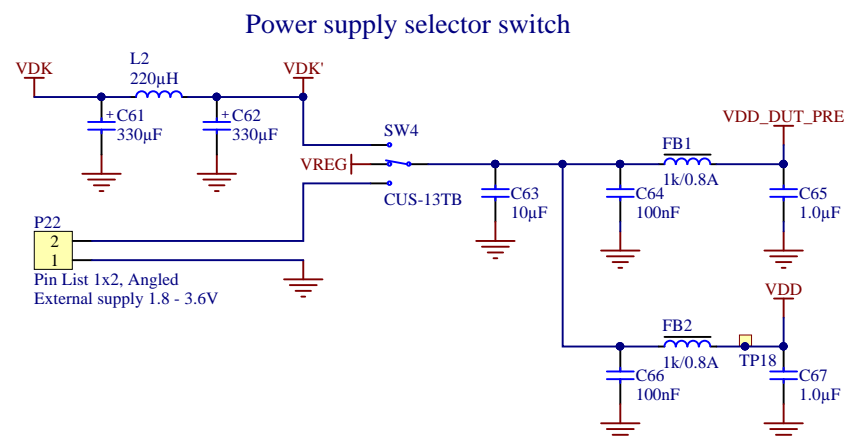
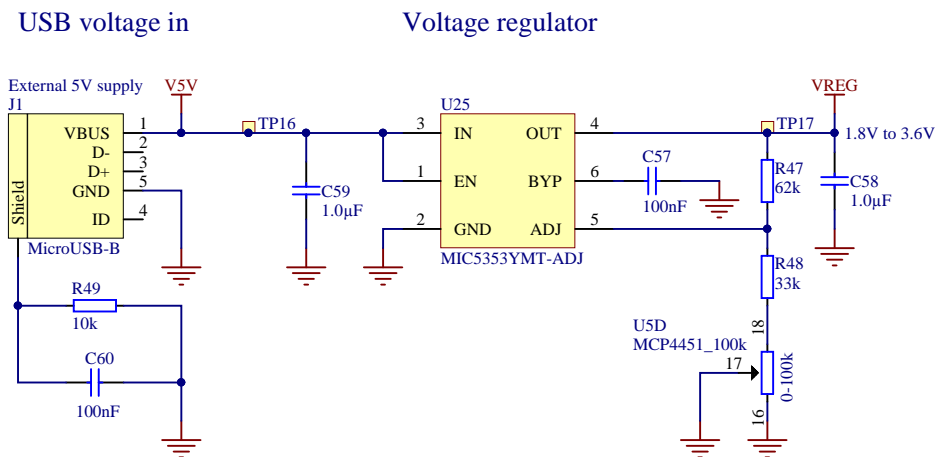



## Power Profiler - Current Measurement

Size A3	Project Number 4425
Date: 07.06.2016	
File: pca63511 - Current Measurement.SchDoc	







Title <b>Power Profiler - Power supply</b>		
Size <b>A4</b>	Project Number <b>4425</b>  Revision <b>1.0.0</b>	
Date: <b>07.06.2016</b> File: <b>pca63511 - Power supply.SchDoc</b>		Sheet <b>4</b> of <b>4</b> Drawn By: <b>RUBR</b>

